



Vivotek *IP Surveillance System*

Network Camera IP3111/3121

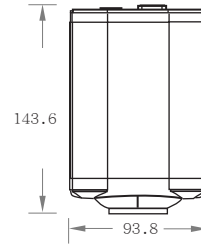
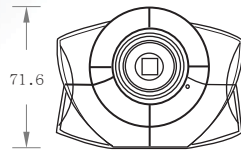
Vivotek's IP surveillance technology offers more future-proof and cost-effective solutions to help you migrating from analog to digital in a smooth way. Connecting to a network or modem, our digital compression technology ensures the lowest bandwidth requirement without sacrificing image quality. Vivotek's IP3111/3121 network cameras are implemented by a DSP, which provides the most professional embedded system ideal for transmitting multimedia streams over existing IP network.

Features

- High performance and fully configurable MPEG4 compression
- Optimal synchronization of audio and video
- Built-in CCD and extension for auto iris lens
- Built-in web server for global access
- Motion detection with 3 sensitive windows
- Remote PT scanner control
- Pre/Post alarm snapshots
- Remote control for sensor and alarm
- WAN support via external modem

Technical Specifications

IP3111/3121



Model

- IP3111 NTSC CCD
- IP3121 PAL CCD

System

- CPU: Trimedia PNX1300
- RAM: 16MB SDRAM
- ROM: 2MB FLASH ROM

Networking

- Protocol
TCP/IP, HTTP, SMTP, FTP, Telnet, NTP, DNS and DHCP
- Modem
PPP(dial-up, direct cable connection)
- Ethernet
10 baseT or 100 baseT Fast Ethernet auto negotiation

Video

- Algorithm supported
MPEG4(short header mode)
- Features
Adjustable image size, quality and bit-rate
Time stamp and text overlay
3 motion detection windows
- Resolution
IP3111(NTSC)
Up to 30 frames at 176x120
Up to 30 frames at 352x240
IP3121(PAL)
Up to 25 frames at 176x144
Up to 25 frames at 352x288

Serial Port

- 9 pin D-SUB RS232 or RS485
(PTZ camera control or modem)
max. 115.2kbps

Camera Specification

- 1/3 inch color CCD image sensor
1 Lux / F2.0
AGC, AWB, AES
- IP3111
Resolution: 512(H)x492(V)
Electronic shutter: 1/60~1/100,000sec.
- IP3121
Resolution: 512(H)x582(V)
Electronic shutter: 1/50~1/100,000sec.

Lens

- Standard CS-mount type, 6.0mm, F1.8

Audio

- 24kbps and 8kbps (optional)

Microphone

- Omni-directional
- Frequency
50 ~ 16000Hz
- S/N ratio
More than 60dB

General I/O

- 1 sensor input max. 12VDC 50mA
- 1 relay output max. 24VDC 1A / 125VAC 0.5A

LED Indicators

- Network indicator
- Heartbeat indicator
- Status indicator

Dimension

- Length: 143.6mm
- Width: 93.8mm
- Height: 71.6mm

Weight

- NET .700g

Power

- Consumption: near 5.4W
- Input: 100-240VAC, 50/60Hz, 0.4A
- Output: 12VDC, 1.5A

Operating Environment

- Temperature: 0~50°C(32~122°F)
- Humidity: 95% RH

EMI & Safety

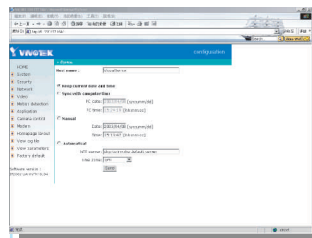
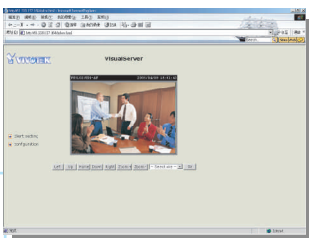
- CE, FCC

Viewing System Requirement

- Operation system: Microsoft Windows98 SE, ME, NT4.0, 2000, XP
- Browser: Internet Explorer5.0 or above

Free Bundled ST3201 Software

- Remote configuration and control for four devices
- Event-triggered, scheduled, manual recording
- Instant search with preview windows
- Fast/slow forward replay and pause
- Hard disk quota warning
- Scheduled backup
- AVI format export
- * 16-channel commercial version is available



All specifications are subject to change without notice.
All other trademarks are owned by their respective companies.