

LINC

Control Icon and Hot Key Utility

FEATURES

- Windows utility
- Create device control desktop icons
- Assign device control to keyboard hotkeys
- Change graphics and rename icons
- Drag and Drop icons

BENEFITS

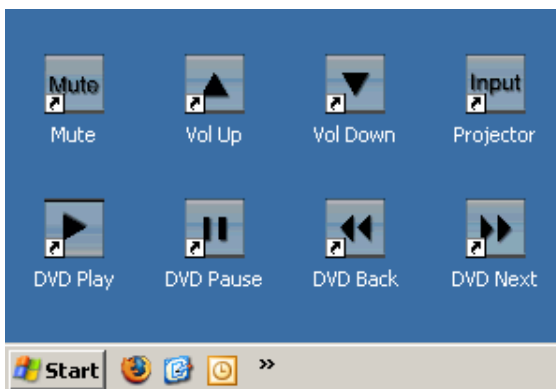
- Small program installs anywhere
- No training required
- Place control buttons on the desktop or in folders
- Customize labels and graphics for ease of use
- Place control commands where they're most useful
- Works with Windows XP

The challenge and frustration of AV device control has always been the creation of the control user interface. The user interface is where most of the time and money is spent in Pro AV control projects, sometimes accounting for up to 80% of the overall control budget. Moreover, after the initial installation a small change in the control environment often leads to sizeable interface redesign projects, adding more expense and, typically, frustration by the customer.

LINC is a utility that eliminates the need for costly, time-consuming programming for many simple control applications. Taking advantage of Calypso's unique controller event database architecture and patent-pending c_Link features, this simple utility creates desktop control icons and control hotkeys on any keyboard. Accordingly, it allows users to place controls virtually anywhere on their desktop or inside a Windows folder structure. Best of all, no programming is needed.

Starting with a fully configured event database on a Calypso Pro I/O or ION controller, the only information needed by the user is the IP address of the controller and the number of the event being triggered. As this information is entered, the utility creates a unique desktop icon for each event. Control icons can be left on the desktop or dragged into any folder. Clicking on the icon, as with any standard program, launches the control event through the Calypso controller, over the network. The same utility allows a user to also assign control commands to keyboard "hotkeys". As with the icons, pressing the hotkey triggers control over the network.

The goal in both cases is to provide easy access to control buttons without requiring programming. Control icons and hotkeys seem to be especially effective in classroom settings or when users prefer to trigger control using a device such as a SMART Board interface.



Windows Desktop LINC Icon Examples



calypso control systems
www.calypsocontrol.com

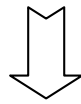
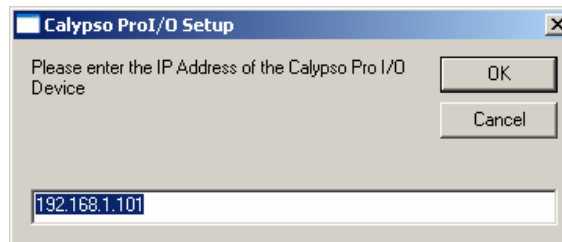
LINC

Control Icon and Hot Key Utility

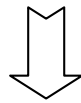
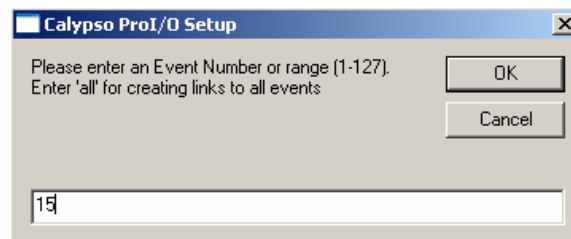


Simple Control Icons

Enter
Controller IP
Address



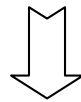
Enter Event
Number



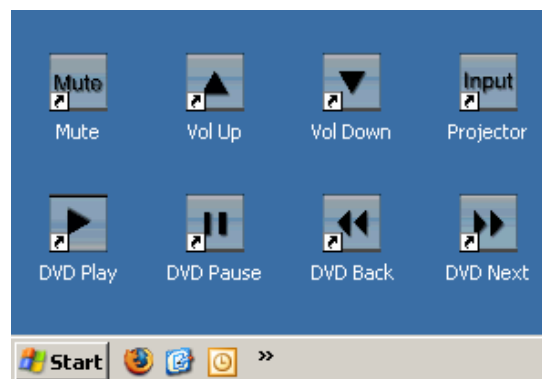
Icon is
Created



FireEvent #15
Shortcut
2KB



Change Icon
Change Name
Move to Folder or
Desktop



ORDERING INFORMATION

Part Number	Description
LINC	Control Icon Utility

Calypso Control Systems, Inc.
944 O'Keefe Road
Hudson, WI 54016
Tel: 715-381-9646
Fax: 715-381-9647
www.calypsocontrol.com

