

# Milestone XProtect Professional:

high performance IP video surveillance with a full feature set.

XProtect Professional is the right product for medium to large installations wanting robust surveillance software with full functions for advanced management, flexible scheduling, fast searching and analysis.

Controlling up to 36 cameras per server, XProtect Professional interfaces with standard video and computer hardware equipment – efficient to install and easily scalable for future expansion.

## Three system components – all in one solution:

### THE ADMINISTRATOR

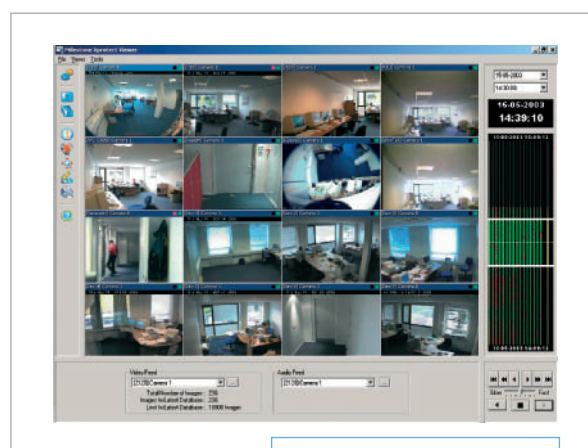
In the Administrator module, you set up all your network cameras, video servers and users of the system. In the friendly interface you define how many camera views you want to see and their scheduling, archiving preferences, e-mail or SMS alerting, and user rights.

### THE MONITOR

The Monitor lets you watch all live camera streams simultaneously from a central location for up to 36 cameras per server. Recordings can be played back in views of up to 16 cameras at the same time.

### THE REMOTE ACCESS SERVER

XProtect Professional has a built-in Web Server for full remote access to alarm information, recorded images and live video. Select different view setups of one to four cameras each for simultaneous live image monitoring, or play back recordings in the same views using the easy navigation buttons and the intuitive Browse Band. Print or export the images as JPEG or AVI to be easily shared as evidence.



Recordings Viewer



Live Monitor

*"We chose the Milestone IP network platform to furnish security to our entire organization, and to be ready for expansions. Digital technology also gives more flexibility to view images faster." Ashraf Selim, Chief Information Officer at Rosenthal & Rosenthal*



# XProtect Professional

has advanced functionality.

## VIDEO & AUDIO RECORDING

- ◆ Available in packages handling 1, 4, 9, 16, 25 or 36 cameras.
- ◆ Dual or triple computer monitor viewing support.
- ◆ Simultaneous video recording, viewing and playback of images.
- ◆ Simultaneous audio recording and instant playback in real time.
- ◆ Recording technology: high speed database holding JPEG images.
- ◆ Daily archiving can be automatically moved to another network drive that gives you more savings in storage capacity on the local server – with images still available for playback.
- ◆ Recording/viewing speed: Up to 30 frames per second per camera (25 for PAL).
- ◆ Recording quality: JPEG up to 1280 x 1024 pixels; other PAL resolutions depend on camera and video server capabilities.
- ◆ Recording capacity: 600,000 images per camera per day for unlimited number of days.
- ◆ Instant search on recordings for events based on time and date, activity/alarm or Video Motion Detection.

## PTZ CONTROL

- ◆ Preset Pan/Tilt/Zoom positions, up to 25 positions per camera.
- ◆ VMD sensitive PTZ patrolling among selected presets.
- ◆ PTZ go-to preset position on events.
- ◆ IPIX virtual technology for PTZ in fisheye lens recorded images.
- ◆ Remote PTZ camera control through the built-in Web server.

## MOTION DETECTION

- ◆ Fully adjustable, built-in, real time Video Motion Detection.
- ◆ VMD supports excluded zones.
- ◆ Speed Up on Motion: cameras can be set to speed up the number of frames when motion is detected or an event occurs, like activation of an external sensor.

## INTEGRATION

- ◆ XProtect Professional offers integration with XProtect Transact for monitoring transaction events with Point-of-Sale or ATM data.
- ◆ XProtect Professional also offers integration with XProtect Matrix for instant transmission of live video to any network monitor.

## REMOTE ACCESS

- ◆ From remote locations via the Web interface you can view live video, or browse and playback recorded images from up to 4 cameras simultaneously.
- ◆ Active alerting through sound, email and SMS.
- ◆ The built-in Web server that provides remote access to live cameras and recordings also allows advanced user profiles via the camera-to-user assignment function: the main administrator can set up separate users to view specific cameras for their locations only.
- ◆ Logging information shows which users have logged on through the Web server interface, with which cameras, and when.
- ◆ Results can be generated as a printed report with time and date stamp, as a JPEG image, or as an AVI film with optional audio.
- ◆ Export audio recordings in WAV format.
- ◆ Control your PTZ cameras and view alarm summaries remotely.
- ◆ Create AVI files or save JPEG images from multiple cameras simultaneously, through the built-in Web server.
- ◆ Choose to print documentation reports remotely or centrally.
- ◆ Output relays provide remote control of gates, etc.

## SYSTEM REQUIREMENTS:

### For up to 500 fps\* in total:

OS: Windows 2000 Pro, 2000 Server, XP Pro, 2003 Server

CPU: Dual P4 Xeon, 2.4 GHz

RAM: 1 Gbyte

Network: Ethernet 1 Gbit

Video card: AGP (min. 1024x768)

Video colors: True 24 bit

HDD: Fast SCSI

*\*Resolution 352x288 (12-18 KB image size)*

### For up to 200 fps\* in total:

OS: Windows 2000 Pro, 2000 Server, XP Pro, 2003 Server

CPU: Pentium 4, 2.4 GHz

RAM: 1 Gbyte

Network: Ethernet 100 Mbit

Video card: AGP (min. 1024x768)

Video colors: True 24 bit

HDD: E-IDE (7200 rpm recommended)

*\*Resolution 352x288 (12-18 KB image size)*

